



GUOYEXING OPTOELECTRONICS CO.LTD

SPECIFICATION

FOR APPROVAL

ISSUED DATE :

CUSTOMER :

DESCRIPTION :

MODEL NO.: GYX-P6F03D-84S-V1.0

DOCUMENTNO. :

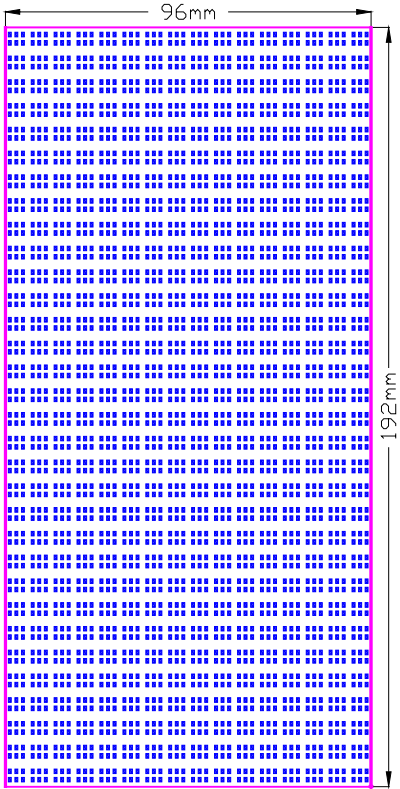
[GUOYEXING TECH.]

| ISSUE | REVIEW | APPRL |
|-------|--------|-------|
| | | |

[CUSTOMER APPROVAL]

| | | |
|--|--|--|
| | | |
| | | |

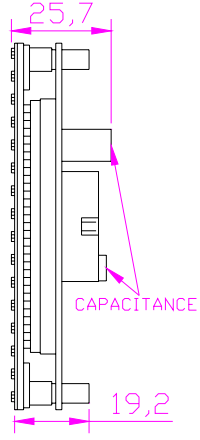
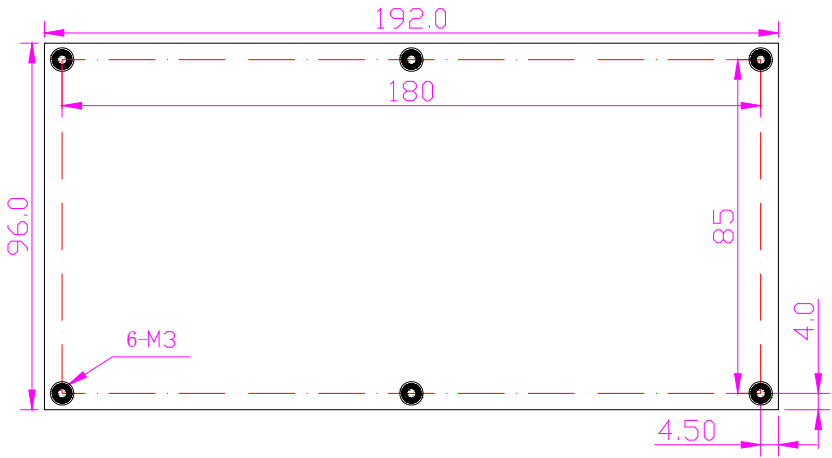
***DATE—CONNECTOR (JIN1, JOUT1)**



| PIN NO | SIGNAL DESCRIBE | PIN NO | SIGNAL DESCRIBE |
|--------|-----------------|--------|-----------------|
| 1 | R1 | 2 | G1 |
| 3 | B1 | 4 | GND |
| 5 | R2 | 6 | G2 |
| 7 | B2 | 8 | A |
| 9 | B | 10 | C |
| 11 | CLK | 12 | GND |
| 13 | LAT | 14 | GND |
| 15 | OE | 16 | GND |

***POWER CONNECTOR (J POWER1)**

| NO | SIGNAL DESCRIBE | LEVEL |
|----|-----------------|-------|
| 1 | VCC | 5 (V) |
| 2 | GND | 0 (V) |
| 3 | GND | 0 (V) |
| 4 | VDD | 5 (V) |

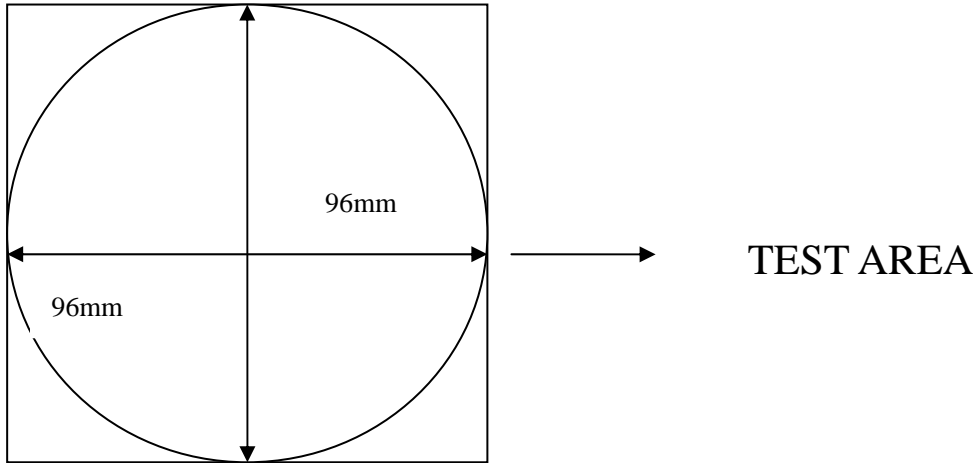


5、 OPTICAL CHARACTERISTICS

Ta=25°C

| TTEM | SYMBOL | COND | MIN. | TYP | MAX | UNIT |
|------------|---------|------------------|------|------|------|-------------------|
| Brightness | RED | Vcc=5V VDD=5V | 110 | 135 | 160 | Mcd |
| | P-GREEN | | 50 | 75 | 100 | |
| | BLUE | | 72 | 90 | 108 | |
| | WHITE | | 2600 | 4300 | 5700 | Cd/m ² |
| Wavelength | RED | — | — | 625 | — | nm |
| | GREEN | | — | 525 | — | |
| | BLUE | | — | 468 | — | |

(*1)

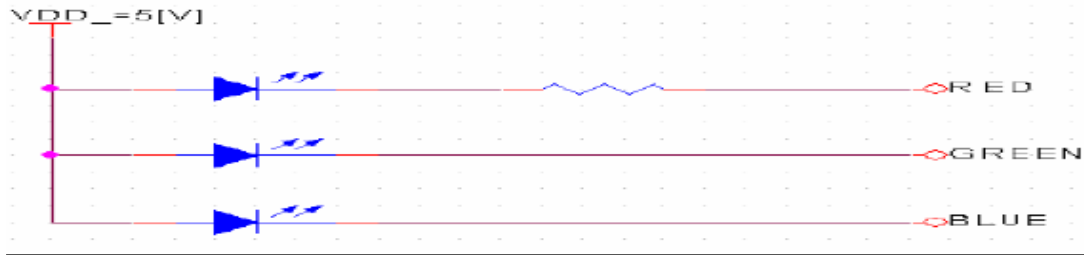


6、 ELECTRICAL CHARACTERISTICS

6-1.Voltage-Current Characteristics

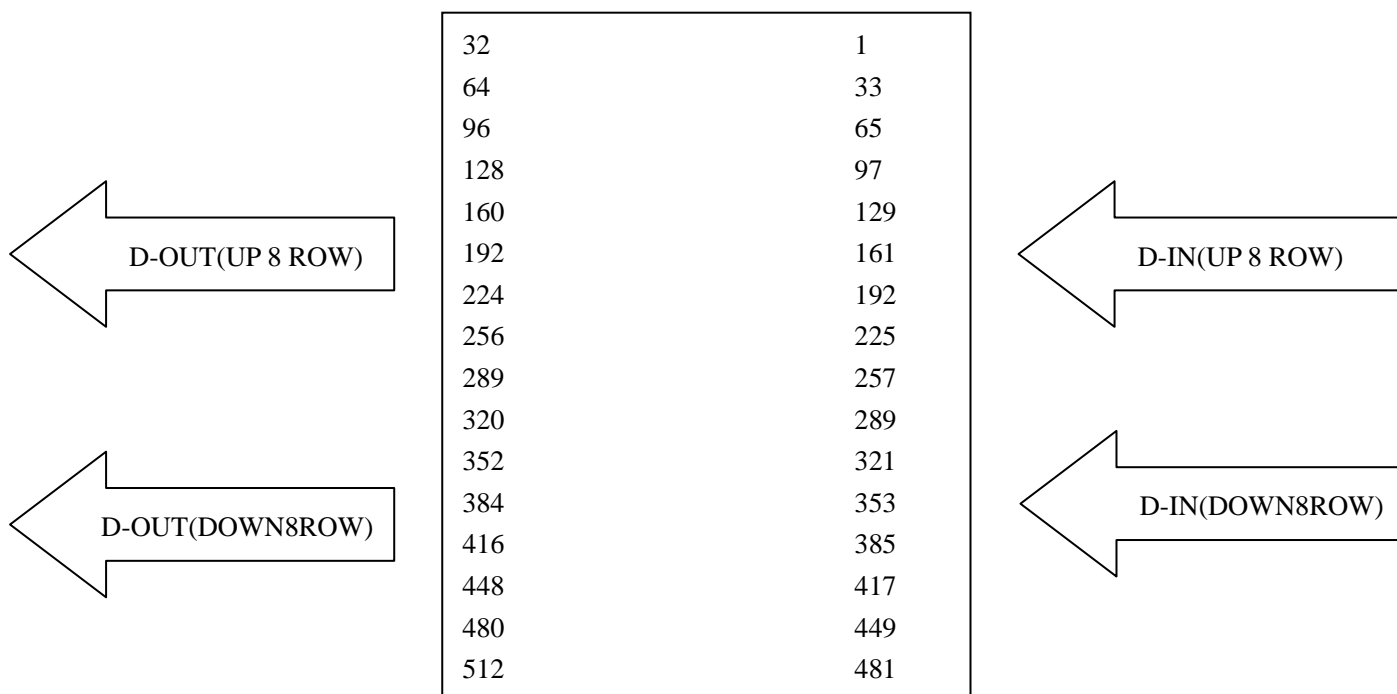
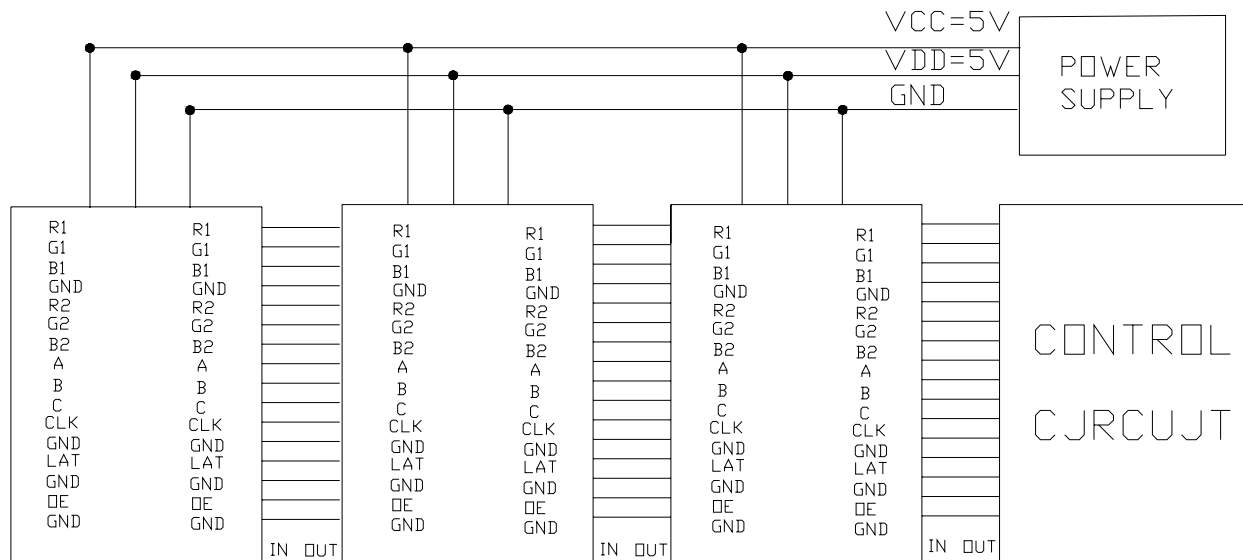
Ta=25°C

| ITEM | SYMBOL | COND | MIN | TYP. | MAX | UNIT |
|-----------------------|--------|------------------|-----|------|-----|------|
| Supply voltage(LOGIC) | Vcc | — | | 5 | | V |
| Supply voltage(LED) | Vdd | — | | 5 | | V |
| Supply current(LOGIC) | Icc | Vcc=5V | — | 200 | | mA |
| Supply-current | RED | Lighting —all | | 3.84 | | A |
| | GREEN | | | | | |
| | BLUE | | | | | |



7. OTHER ITEM

7—1. Connection example between products



8. INTERFACE

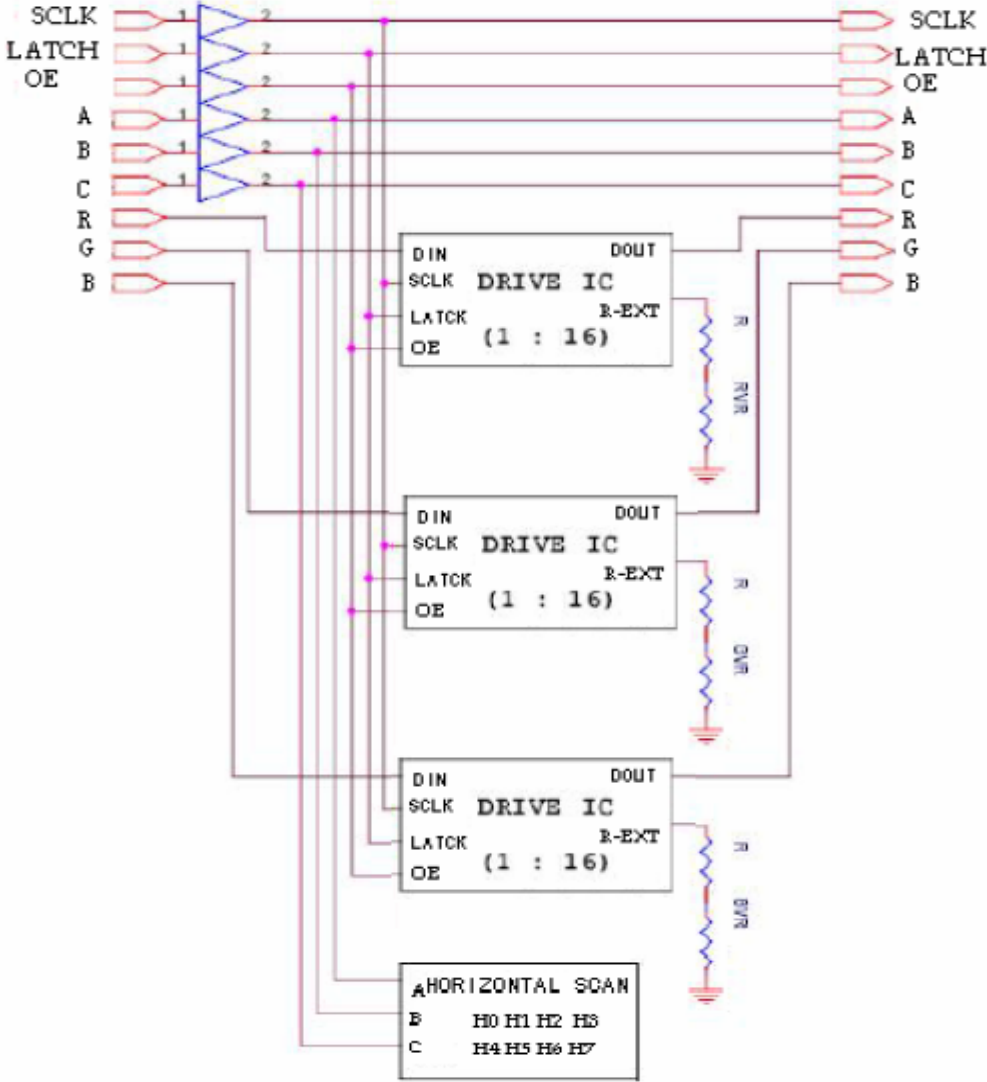
8-1.IN/OUT PUT connector pin number & signal function

| | Pin No. | SIGNAL | SIGNAL-FUNCTION |
|---|---------|--------|---------------------------|
| TRANSVERSE INPUT/ OUTPUT SIGNAL (IN) PORT | 1 | R1 | RED DATA (UP 8 ROW) |
| | 2 | G1 | P-GREEN DATA (UP 8 ROW) |
| | 3 | B1 | BULE DATA (UP 8 ROW) |
| | 4 | GND | GROUND |
| | 5 | R2 | RED DATA (DOWN 8 ROW) |
| | 6 | G2 | P-GREEN DATA (DOWN 8 ROW) |
| | 7 | B2 | BULE DATA (UP 8 ROW) |
| | 8 | A | HORIZONTAL SCAN ADDRESS 0 |
| | 9 | B | HORIZONTAL SCAN ADDRESS 1 |
| | 10 | C | HORIZONTAL SCAN ADDRESS2 |
| | 11 | CLK | SHIFT CLOCK |
| | 12 | GND | GROUND |
| | 13 | LAT | DATA LATCH |
| | 14 | GND | GROUND |
| | 15 | OE | OUTPUT ENABLE |
| | 16 | GND | GROUND |

8-2. Power connector pin number & signal function

| NO | SIGNAL | LEVEL | FUNCTION | WIRE |
|----|--------|-------|--------------|-------|
| 1 | VCC | 5 [V] | LOGIC | RED |
| 2 | GND | 0 [V] | GROUND | BLACK |
| 3 | GND | 0 [V] | GROUND | BLACK |
| 4 | VDD | 5 [V] | POWER OF LED | RED |

9.BLOCK DIAGRA

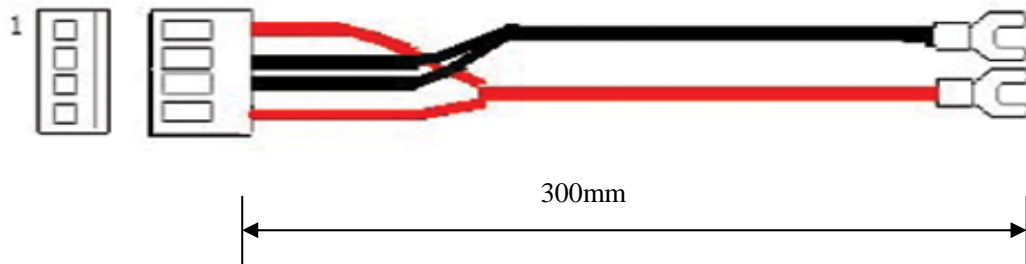


| | | | | |
|--------|--------|--------|--------|--------|
| ROUT1 | ROUT2 | ROUT3 | ROUT4 | |
| {1:16} | {1:16} | {1:16} | {1:16} | |
| | | | | BOUT1 |
| | | | | {1:16} |
| | | | | BOUT2 |
| | | | | {1:16} |
| | | | | BOUT3 |
| | | | | {1:16} |
| | | | | BOUT4 |
| | | | | {1:16} |
| GOUT1 | GOUT2 | GOUT3 | GOUT4 | |
| {1:16} | {1:16} | {1:16} | {1:16} | |

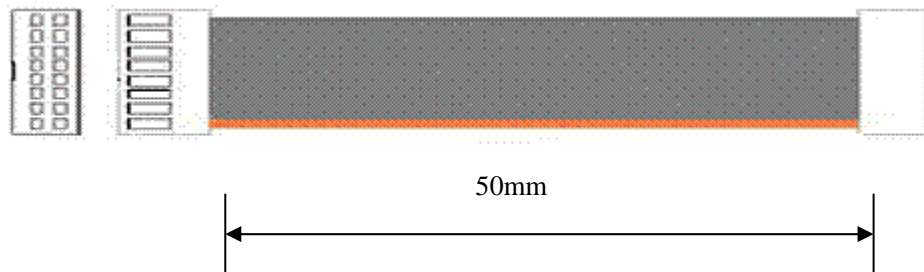
LED 点阵
(16×32)

10. CABLE SPEC

<POWER CABLE>



<SIGNAL CABLE>



| PART NO. | STANDARD | VENDOR |
|-----------------|---|--------|
| FL01-14D-50mm | 2.54mm PITCH 16 P WIRE (FLAT CABLE/50mm) | |
| Gu396-0418-300R | 4mm PITCH 4 P WIRE | |

| | |
|--|--------------------|
| MODEL NO GYX-P6F03D-84S-V1.0 | PAGE 9/9 |
|--|--------------------|

12. INSTALLATION NOTICES

1) Please apply this modules at a safe surrounding against noise because the error or mis-operation may occur at fragile place of noise.

2) Check surely the power condition to operation test in order to prevent module damage which might be caused by the excessive power.

3) Modules should be set up within the guarantee limitation and especially kept away from salt dust, soot and SO₂ gas etc.

4) When there is no data transmission at operation test just turn power off immediately. Otherwise operating gets damaged.

5) Please apply this product under the range of guarantee, considering the sufficient radiation in case of the assembled multi-module.

6) V led is recommended the maximum of rating voltage for best result under the low temperature such as -15° C below.

7) Please check the insert direction when you attach SIGNAL CONNECTOR or link the power.

13. REFERENCES

1) Check SYSTEM weight before apply modules into housing.

2) Operation test or anti-static electricity need for the COMS attached in circuit board.

3) Sufficient power capability is necessary to deal with the excessive power which might be drastically caused depending on the condition of the on/off of unit.(peak current times 1.5 and higher)

4) power for logic or LED requires Switching Mode Supply.

5) Use power bus bar when connecting power. It helps power to keep from falling down..

6) Please don't change "switch was set as outgoing" The switch was set as out-going.

7) Any further question or trouble herein will be worked out mutually by customer and supplier through sales manager.
