



GUOYEXING OPTOELECTRONICS CO.LTD

SPECIFICATION

FOR APPROVAL

ISSUED DATE :

CUSTOMER :

DESCRIPTION :

MODEL NO.: GYX—P7.62F3D-85S-VER2.0

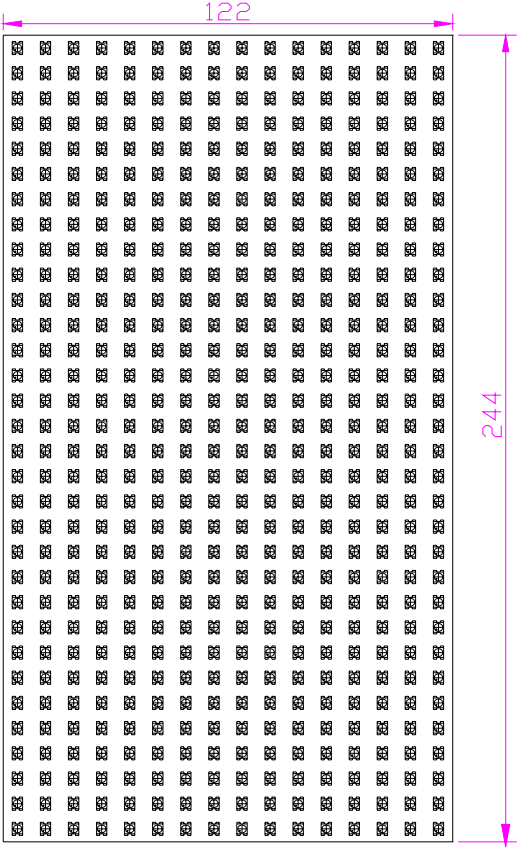
DOCUMENTNO. :

[GUOYEXING TECH.]

ISSUE	REVIEW	APPRL

[CUSTOMER APPROVAL]

***DATE—CONNECTOR (JIN1、JOUT1)**

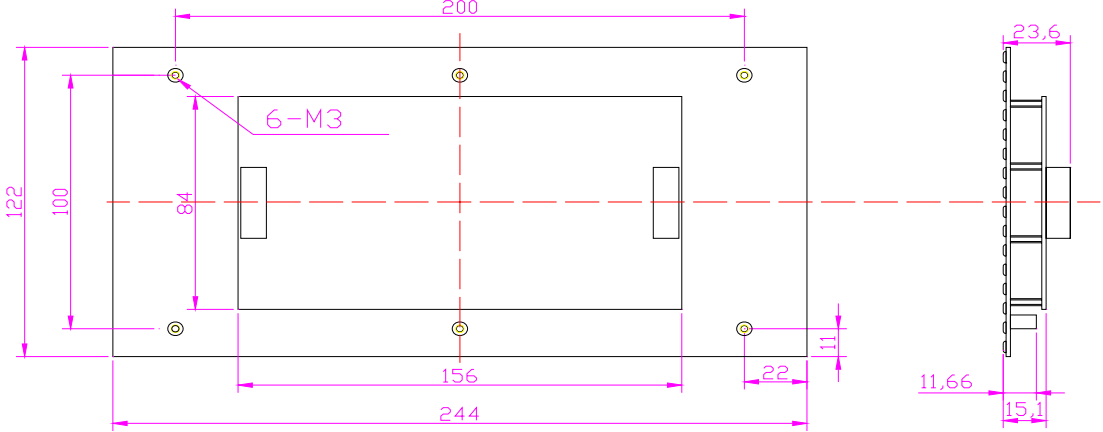


PIN NO	SIGNAL DESCRIBE	PIN NO	SIGNAL DESCRIBE
1	R0	2	G0
3	B0	4	GND
5	R1	6	G1
7	B1	8	A
9	B	10	C
11	CLK	12	GND
13	LAT	14	GND
15	OE	16	GND

***POWER CONNECTOR (J POWER1)**

NO	SIGNAL DESCRIBE	LEVEL
1	VDD	5 (V)
2	VDD	5 (V)
3	VCC	5 (V)
4	GND	0 (V)
5	GND	0 (V)

UNIT :mm

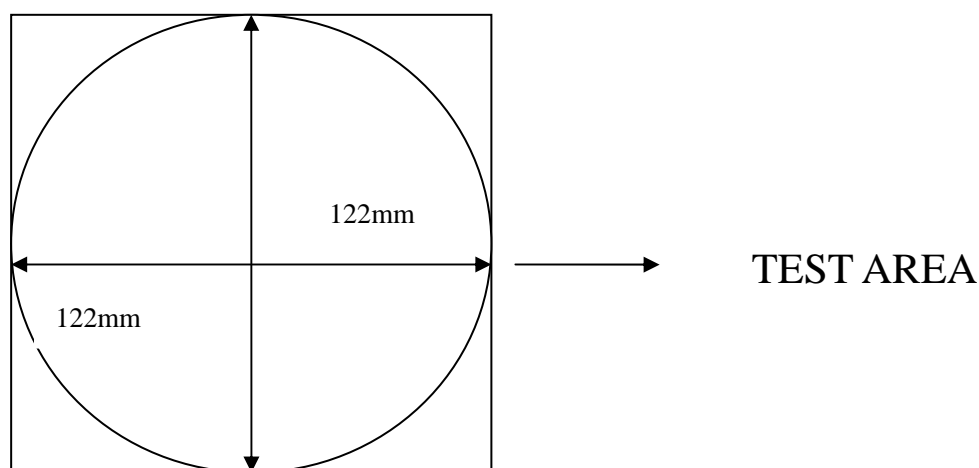


5、OPTICAL CHARACTERISTICS

Ta=25°C

TITEM	SYMBOL	COND	MIN.	TYP	MAX	UNIT
Brightness	RED	Vcc=5V VDD=5V	180	320	400	Mcd
	P-GREEN		280	420	600	
	BLUE		70	130	150	
	WHITE		1300	1500	1700	Cd/m ²
Wavelength	RED	—	—	625	—	nm
	GREEN		—	525	—	
	BLUE		—	468	—	

(*1)

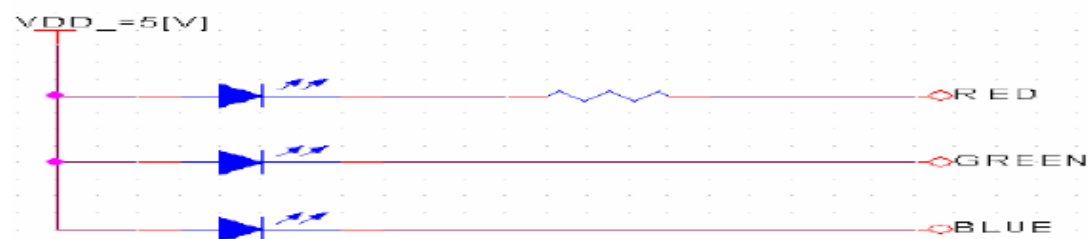


6、ELECTRICAL CHARACTERISTICS

6-1.Voltage-Current Characteristics

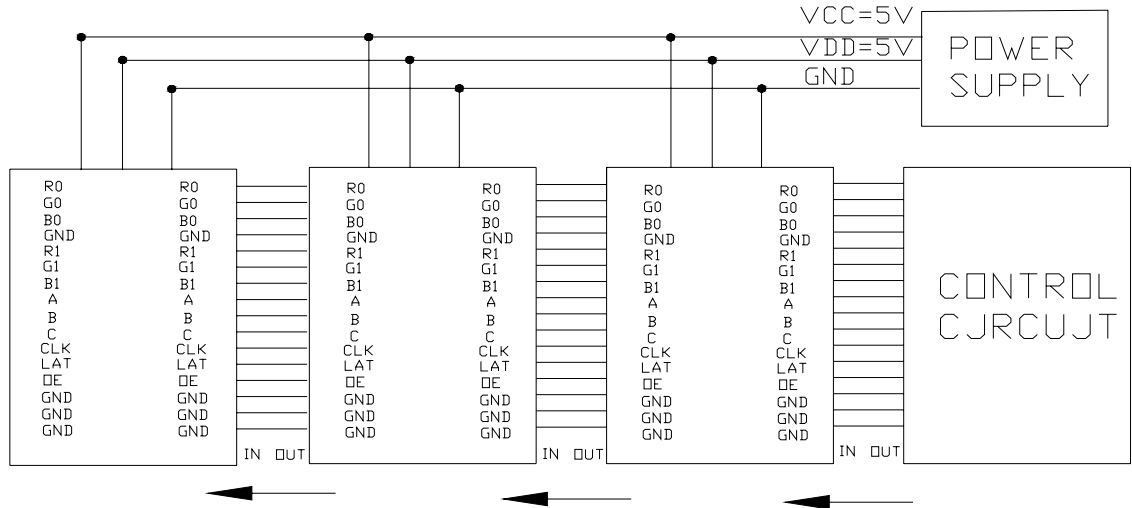
Ta=25°C

ITEM	SYMBOL	COND	MIN	TYP.	MAX	UNIT
Supply voltage(LOGIC)	Vcc	—		5		V
Supply voltage(LED)	Vdd	—		5		V
Supply current(LOGIC)	Icc	Vcc=5V	—	200		mA
Supply-current	RED	Lighting —all		3.84		A
	GREEN					
	BLUE					



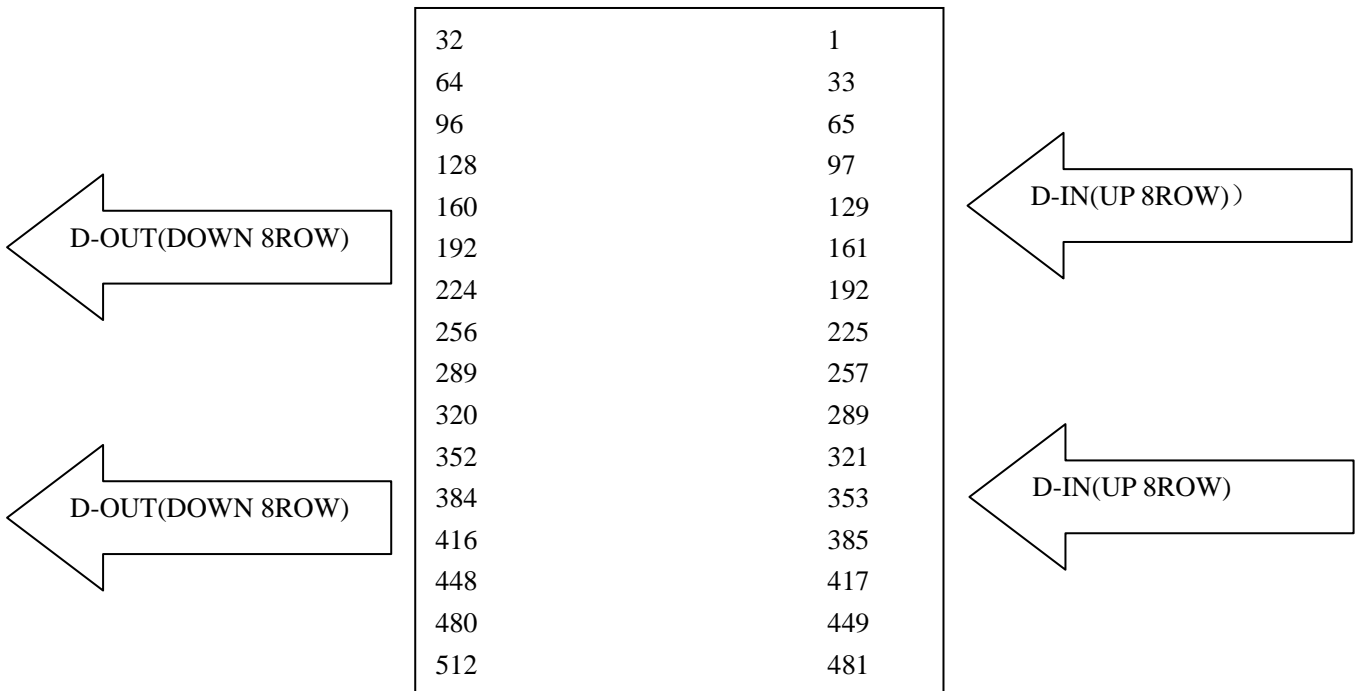
7. OTHER ITEM

7-1. Connection example between products



7.2 Explanation of data direction

Inputed signal with picture of summer period shift after is done.



8. INTERFACE

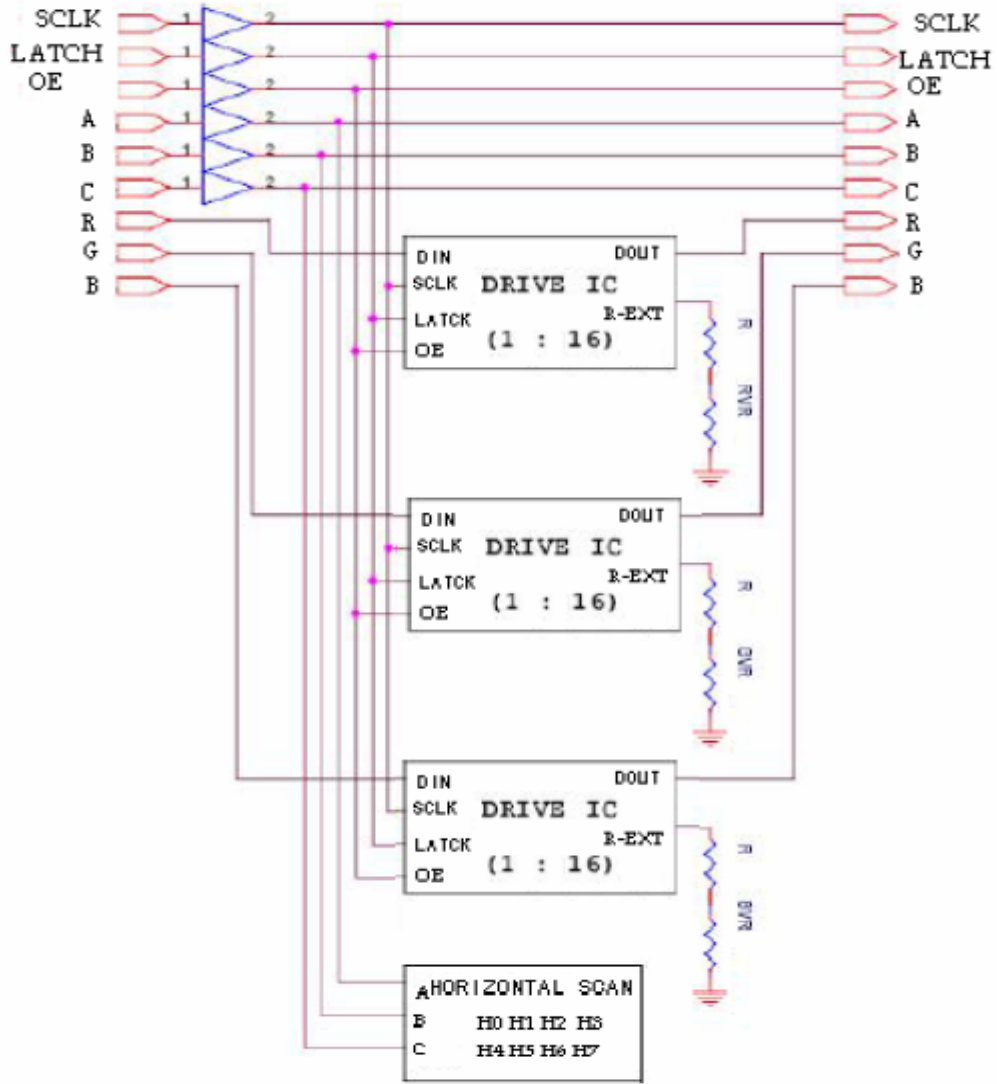
8-1.IN/OUT PUT connector pin number & signal function

	Pin No.	SIGNAL	SIGNAL-FUNCTION
TRANSVERSE INPUT/ OUTPUT SIGNAL (IN) PORT	1	R1	RED DATA (UP 8 ROW)
	2	G1	GREEN DATA (UP 8 ROW)
	3	B1	BLUE DATA (UP 8 ROW)
	4	GND	GROUND
	5	R2	RED DATA (DOWN 8 ROW)
	6	G2	GREEN DATA (DOWN 8 ROW)
	7	B2	BLUE DATA (DOWN 8 ROW)
	8	A	HORIZONTAL SCAN ADDRESS 0
	9	B	HORIZONTAL SCAN ADDRESS 1
	10	C	HORIZONTAL SCAN ADDRESS 2
	11	SCLK	SHIFT CLOCK
	12	GND	GROUND
	13	LATCH	DATA LATCH
	14	GND	GROUND
	15	OE	OUTPUT ENABLE
	16	GND	GROUND

8-2. Power connector pin number & signal function

NO	SIGNAL	LEVEL	FUNCTION	WIRE
1	VDD	5 [V]	LOGIC	RED
2	VDD	5 [V]	POWER OF LED	RED
3	VCC	5 [V]	LOGIC	RED
4	GND	0 [V]	GROUND	BLACK
5	GND	0 [V]	GROUND	BLACK

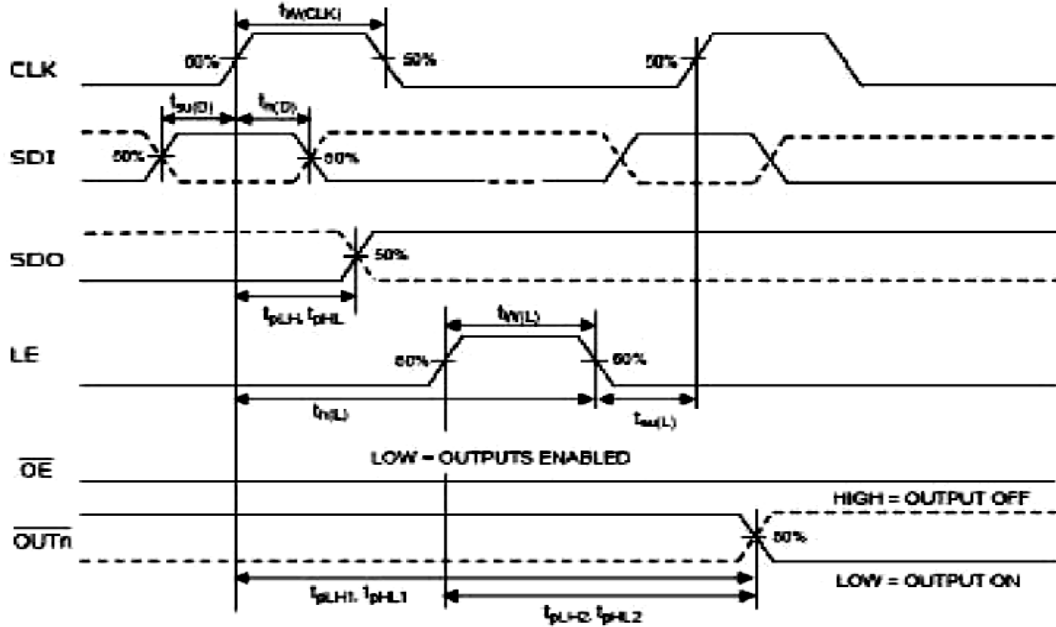
9.BLOCK DIAGRA



ROUT1	ROUT2	ROUT3	ROUT4	GOUT1
{1:16}	{1:16}	{1:16}	{1:16}	{1:16}
LED ARRAY				GOUT2
(16×32)				{1:16}
				GOUT3
				{1:16}
BOUT1	BOUT2	BOUT3	BOUT4	GOUT4
{1:16}	{1:16}	{1:16}	{1:16}	{1:16}

10. TIMING

10-1. MAP

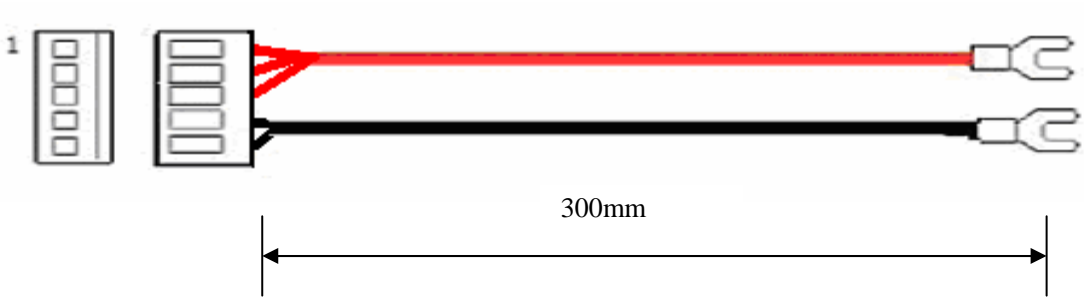


10-2. OPERATION TIMING

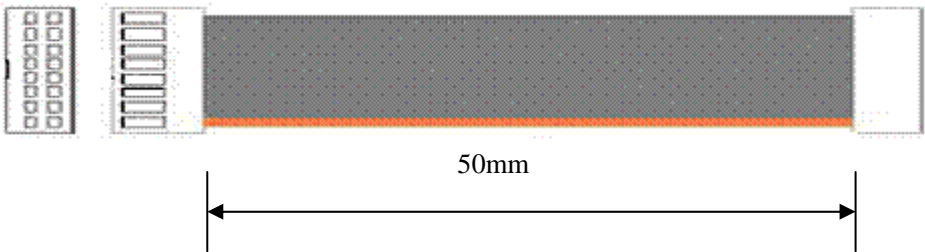
Characteristic	Symbol	condition	min	typ	max	unit
Propagation Delay Time ("L" To "H")	CLK • OUTn	T ph1	-	50	100	ns
	LE • OUTn	T ph2	-	50	100	ns
	OE ⁻ • OUTn	T ph3	-	20	100	ns
	CLK • SDO	T plh	15	20	-	ns
Propagation Delay Time ("H" To "L")	CLK • OUTn	T phl1	-	100	150	ns
	LE • OUTn	T phl2	-	100	150	ns
	OE ⁻ • OUTn	T phl3	-	50	150	ns
	CLK • SDO	T plh	16	20	-	ns
Pulse width	CLK	T (clk)	20	-	-	ns
	LE	T (l)	20	-	-	ns
	OE	T (oe)	200	-	-	ns
Hold time for LE	T h(l)		5	-	-	ns
Setup time for LE	T su(l)		6	-	-	ns
Hold time for SDI	T n(d)		10	-	-	ns
Setup time for SDI	Lsu(d)		5	-	-	ns
Clock Frequency	F _{clk}	Cascade operation	-	-	25.0	MHz
Maximum CLK rise time	t _{cr}		-	-	500	ns
Maximum CLK fall time	T _{fr}		-	-	500	ns
Output rise time of vout (turn off)	T _{cr}		-	40	120	ns
Output fall time of vout (turn on)	T _{ct}		-	70	200	ns

11. CABLE SPEC

<POWER CABLE>



<SIGNAL CABLE>



PART NO.	STANDARD	VENDOR
FL01-8D-50mm	2.54mm PITCH 16 P WIRE (FLAT CABLE/50mm)	
VH2.54-300	4mm PITCH 5 P WIRE 4MM	

MODEL NO GYX—P7.62F3D-85S-VER2.0	PAGE 10/10
---	-----------------------------

13. INSTALLATION NOTICES

1) Please apply this modules at a safe surrounding against noise because the error or mis-operation may occur at fragile place of noise.

2) Check surely the power condition to operation test in order to prevent module damage which might be caused by the excessive power.

3) Modules should be set up within the guarantee limitation and especially kept away from salt dust, soot and SO₂ gas etc.

4) When there is no data transmission at operation test just turn power off immediately. Otherwise operating gets damaged.

5) Please apply this product under the range of guarantee, considering the sufficient radiation in case of the assembled multi-module.

6) V led is recommended the maximum of rating voltage for best result under the low temperature such as -15° C below.

7) Please check the insert direction when you attach SIGNAL CONNECTOR or link the power. (refer to Hamess wire colors of which the the insert direction is same.)

14 .REFERENCES

1) Check SYSTEM weight before apply modules into housing.

2) Operation test or anti-static electricity need for the COMS attached in circuit board.

3) Sufficient power capability is necessary to deal with the excessive power which might be drastically caused depending on the condition of the on/off of unit.(peak current times 1.5 and higher)

4) power for logic or LED requires Switching Mode Supply.

5) Use power bus bar when connecting power. It helps power to keep from falling down..

6) Please don't change "switch was set as outgoing" The switch was set as out-going.

7) Any further question or trouble herein will be worked out mutually by customer and supplier through sales manager.
