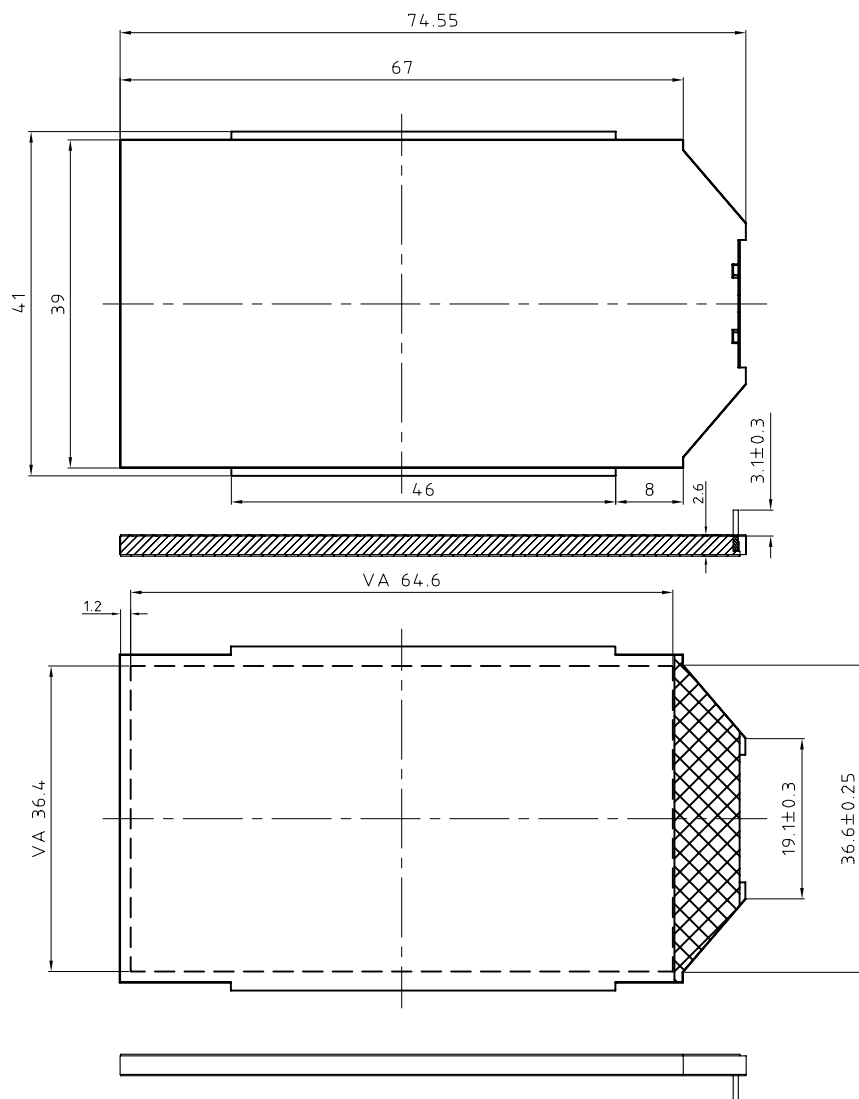


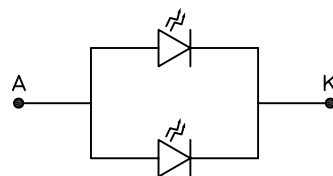
项目(Item)	符号(Symbol)	最小值(Min)	典型值(Type)	最大值(Max)	单位(Unit)	测定条件(Condition)
正向电压(Forward Voltage)	Vf	2.9		3.4	V	If=15*2mA
正向电流(Forward Current)	If		15*2		mA	
反向电流(Reverse Current)	Ir	-	-	0.01	mA	Vr=5V
峰值波长(Peak wavelength)	λ peak	470		475	nm	If=15*2mA
均匀性(Luminous Uniformity)	Δ Lv	70			%	If=15*2mA
*亮度(Luminance)	Lv	25	30		cd/m ²	If=15*2mA
色坐标(Color Chromaticity)	X					
	Y					

项目(Item)	符号(Symbol)	值(Rating)
工作温度 Operating Temperature Range	Topr	-15° C to +75° C
储存温度 Storage Temperature Range	Tstg	-30° C to +80° C

Outline Dimensions(Unit: mm Unmarked Tolerance:±0.20)



Circuit diagram:



			TYPE	CUSTOMER P/N		
			GY0228B-3A			
Revise records	Name	Date	DRAWING		SCALE	VERSION
Design						A02
Check						
Process						共 页
Confirm					GY0228-3.01A	SHENZHEN GUOYEXING OPTOELECTRONICS