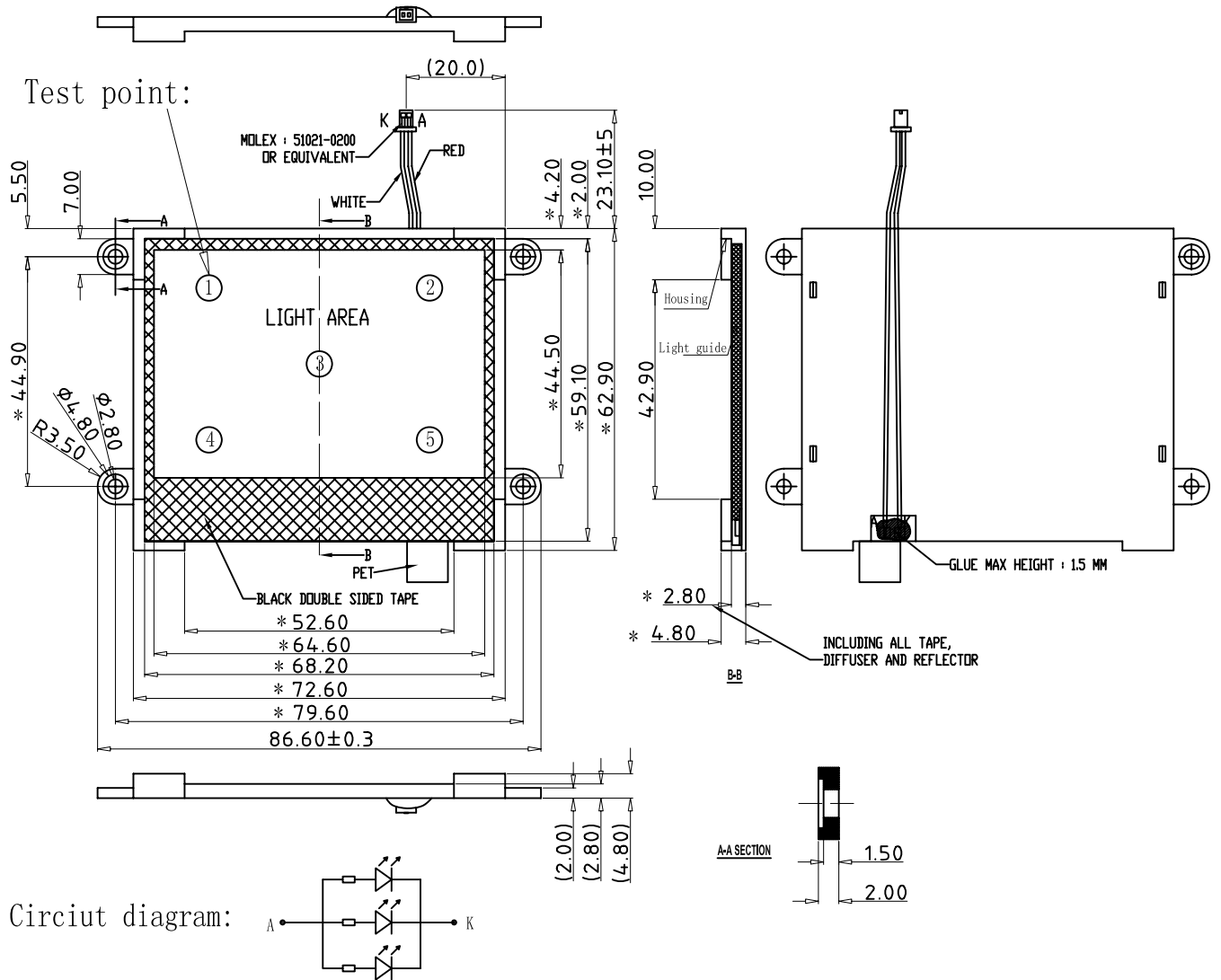


项目(Item)	符号(Symbol)	最小值(Min)	典型值(Type)	最大值(Max)	单位(Unit)	测定条件(Condition)
正向电压(Forward voltage)	Vf		5		V	Vf=5V
正向电流(Forward Current)	If		45	60	mA	Vf=5V
反向电流(Reverse Current)	Ir			0.03	mA	Vr=5V
峰值波长(Peak wavelength)	$\lambda$ peak					
均匀性(Luminous Uniformity)	$\Delta$ Lv	70	75		%	If=15mA
*亮度(Luminance)	Lv	150	300		cd/m <sup>2</sup>	Vr=5V
色坐标(Color Coordinate)	X	0.26		0.32		Vr=5V
	Y	0.26		0.32		

项目(Item)	符号(Symbol)	值(Rating)
工作温度 Operating Temperature Range	Topr	-25° C to +75° C
储存温度 Storage Temperature Range	Tstg	-30° C to +80° C

Outline Dimensions(Unit: mm Unmarked Tolerance:±0.20)



			TYPE	CUSTOMER P/N		
			GY0477W-5A			
Revise records	Name	Date	DRAWING		SCALE	VERSION
Design						A01
Check						
Process						
Confirm						
			GY0477-3.01A	SHENZHEN GUOYEXING OPTOELECTRONICS		